

**This electronic collection of documents is provided
for the convenience of the user
and is Not a Certified Document –**

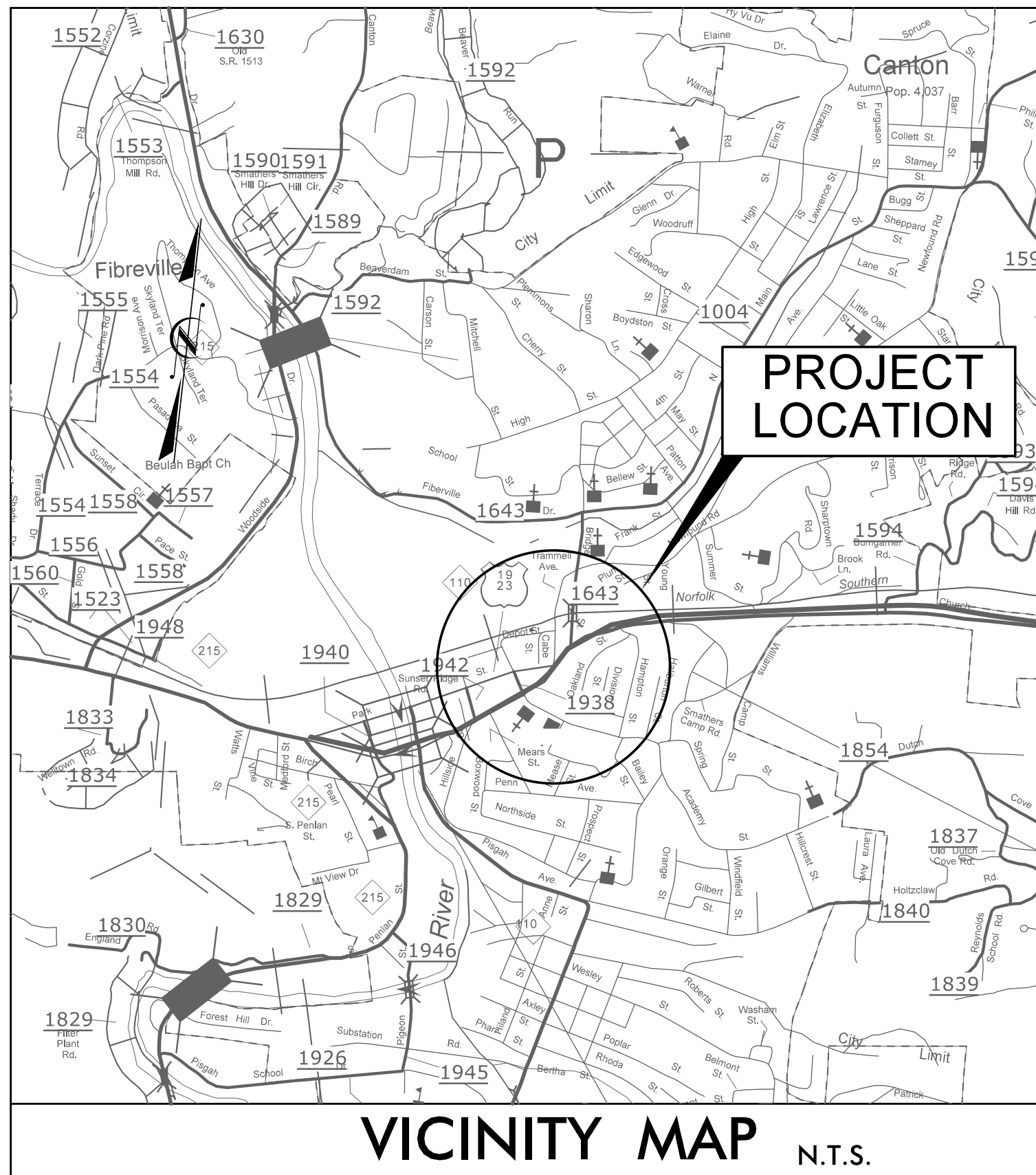
**The documents contained herein were originally issued
and sealed by the individuals whose names and license
numbers appear on each page, on the dates appearing
with their signature on that page.**

**This file or an individual page
shall not be considered a certified document.**

TIP PROJECT: R-5794B

CONTRACT: DN00641

See Sheet 1A For Index of Sheets



STATE OF NORTH CAROLINA
 DIVISION OF HIGHWAYS

HAYWOOD COUNTY

LOCATION: HAYWOOD COUNTY

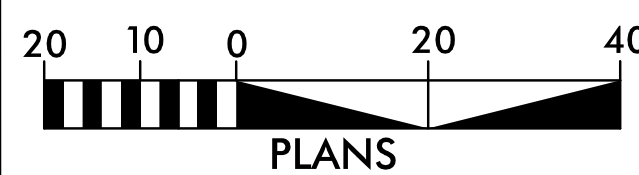
- SITE 1 - BRIDGE STREET (SR 1643) AND NEWFOUND STREET**
- SITE 2 - BRIDGE STREET (SR 1643) AND MIDBLOCK BETWEEN CHURCH AND NEWFOUND STREET**
- SITE 3 - PARK STREET (US 1923 WB) AND ACADEMY STREET (SR 1938)**
- SITE 4 - PARK STREET (US 1923 WB) AND ADAMS STREET (SR 1942)**

TYPE OF WORK: CURB RAMPS

STATE	STATE PROJECT REFERENCE NO.	SHEET NO.	TOTAL SHEETS
N.C.	R-5794B	1	5
STATE PROJ. NO.	F. A. PROJ. NO.	DESCRIPTION	
44910.3.4			



GRAPHIC SCALES



DESIGN DATA

- ADT 2015 = N/A
- ADT 2017 = N/A
- DHV = N/A
- D = N/A
- T = N/A
- V = VARIES
- * TTST = N/A
- FUNC CLASS = LOCAL

PROJECT LENGTH

N/A

Prepared in the Office of:



WSP USA Inc.
 1001 MOREHEAD SQUARE DRIVE
 SUITE 610
 CHARLOTTE, NC 28203
 NC LIC. NO. F-0165

2018 STANDARD SPECIFICATIONS

RIGHT OF WAY DATE:
 N/A

LETTING DATE:

SIERRA HAYNES, PE
 PROJECT ENGINEER

PROJECT DESIGN ENGINEER

HYDRAULICS ENGINEER

SIGNATURE: _____ P.E.

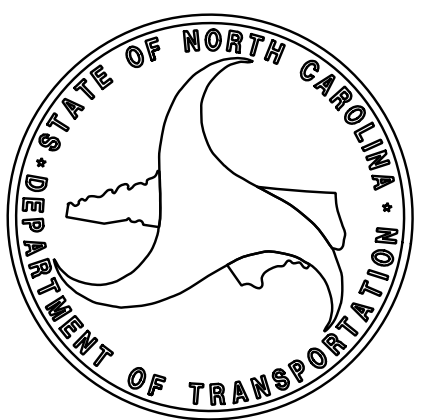
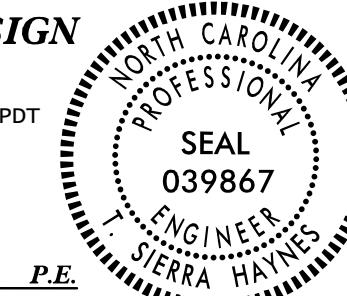
ROADWAY DESIGN ENGINEER

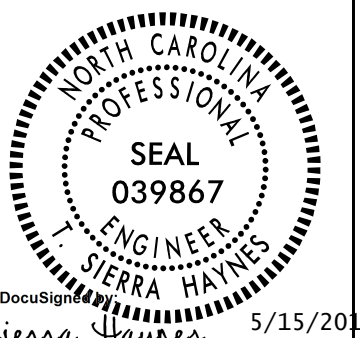
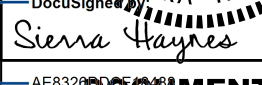
5/15/2018 12:34:10 PM PDT

DocuSigned by:
 Sierra Haynes

AE8326DDCE18488

SIGNATURE:

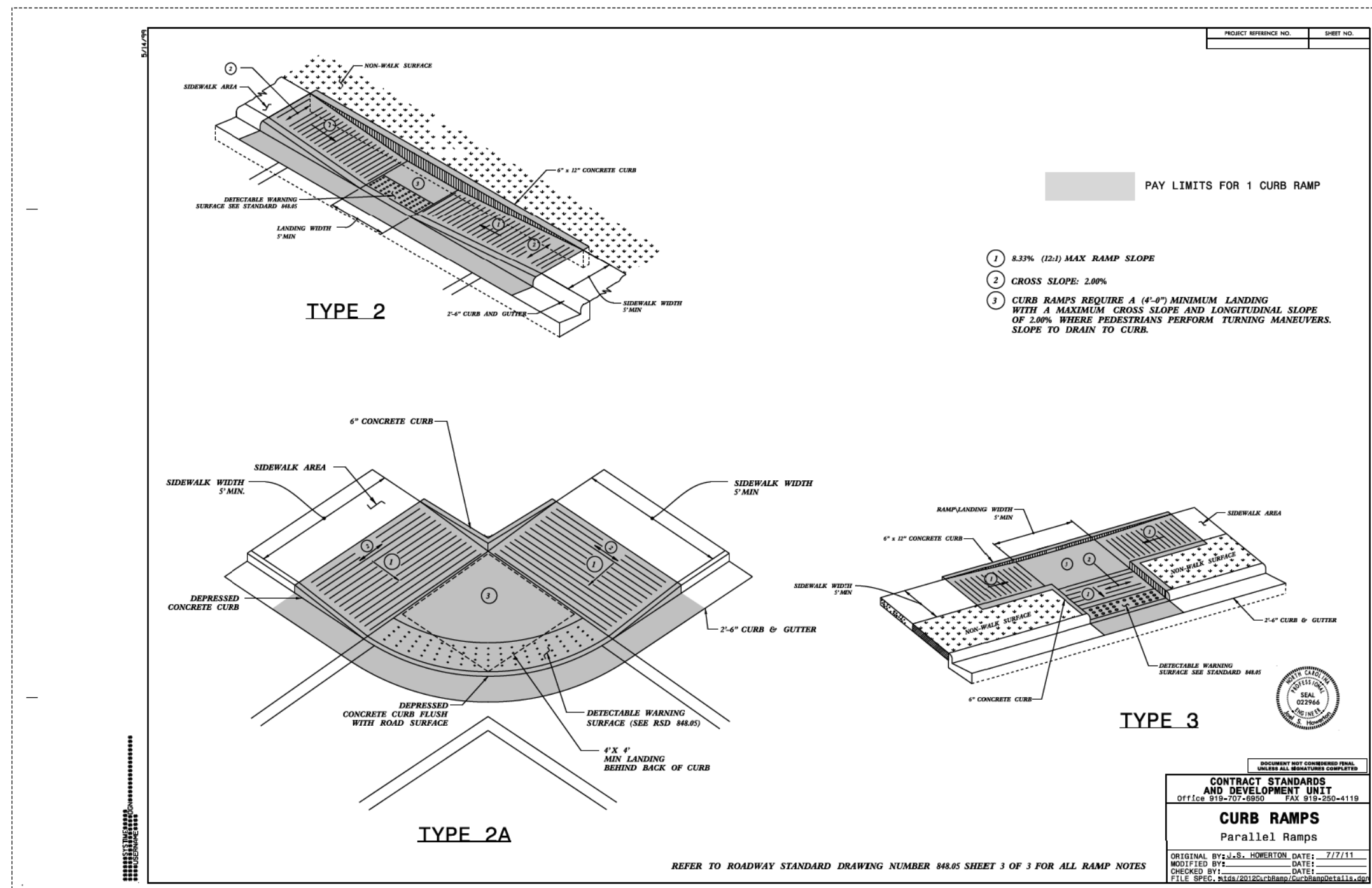
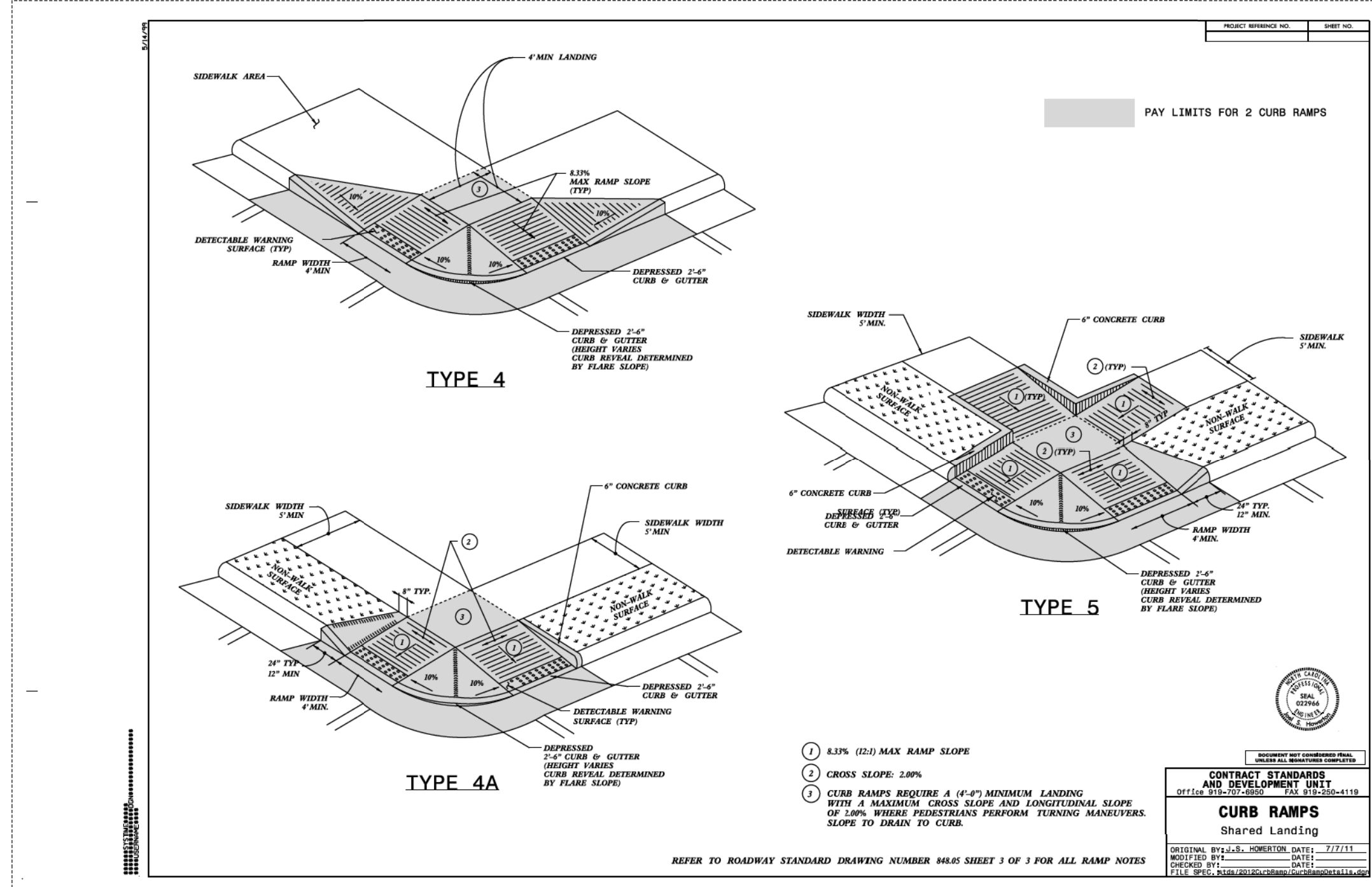
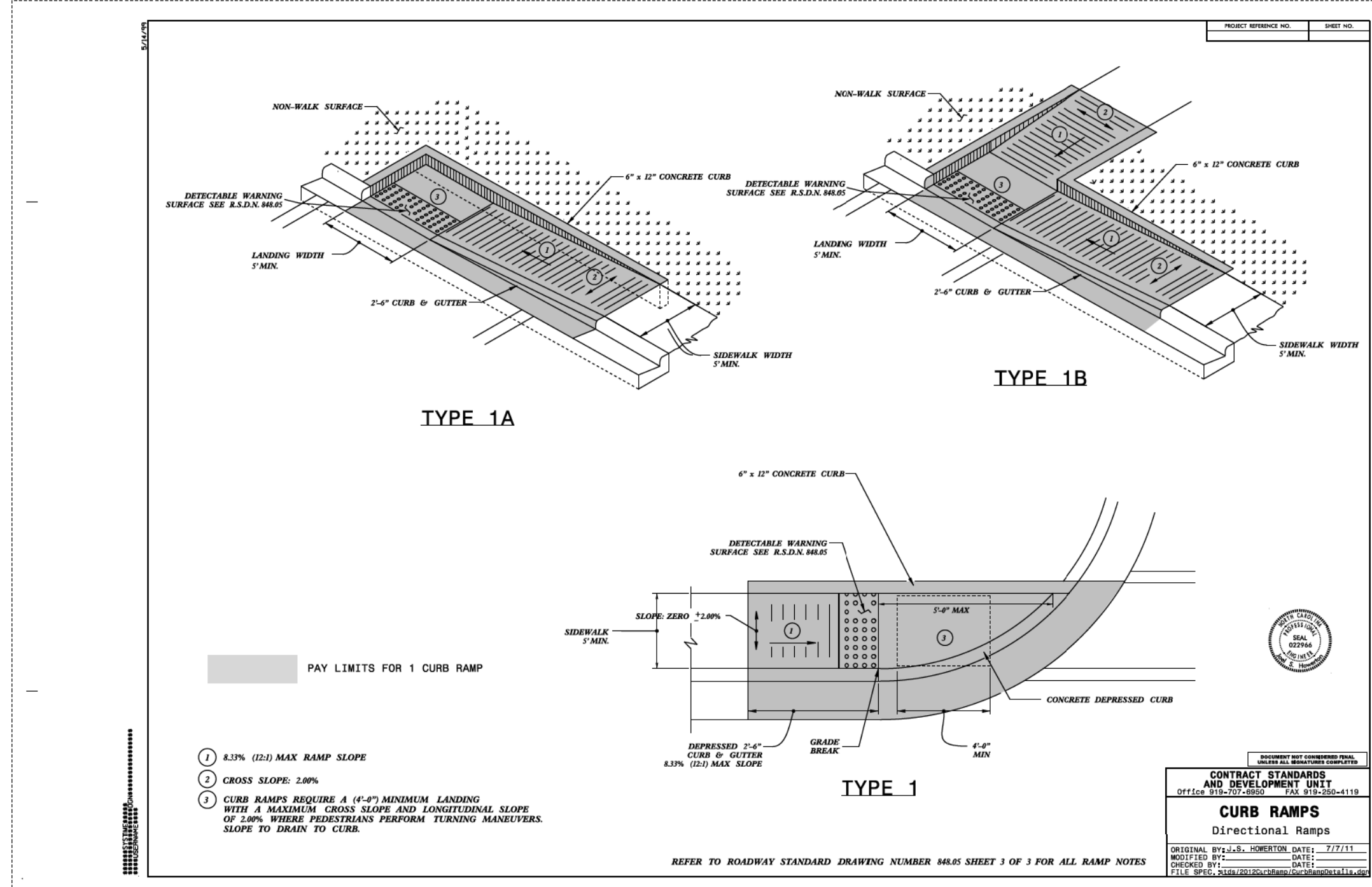


PROJECT REFERENCE NO.	SHEET NO.
R-5794B	1A
RW SHEET NO.	
ROADWAY DESIGN ENGINEER	
	
 5/15/2018 12:34:10 PM PDT	
DOCUMENT NOT CONSIDERED FINAL UNLESS ALL SIGNATURES COMPLETED	

INDEX OF SHEETS

SHEET NUMBER	SHEET
1	TITLE SHEET
1A	INDEX OF SHEETS
2C-1 – 2C-2	RAMP DETAILS
4	PLAN SHEETS

DOCUMENT NOT CONSIDERED FINAL
UNLESS ALL SIGNATURES COMPLETED



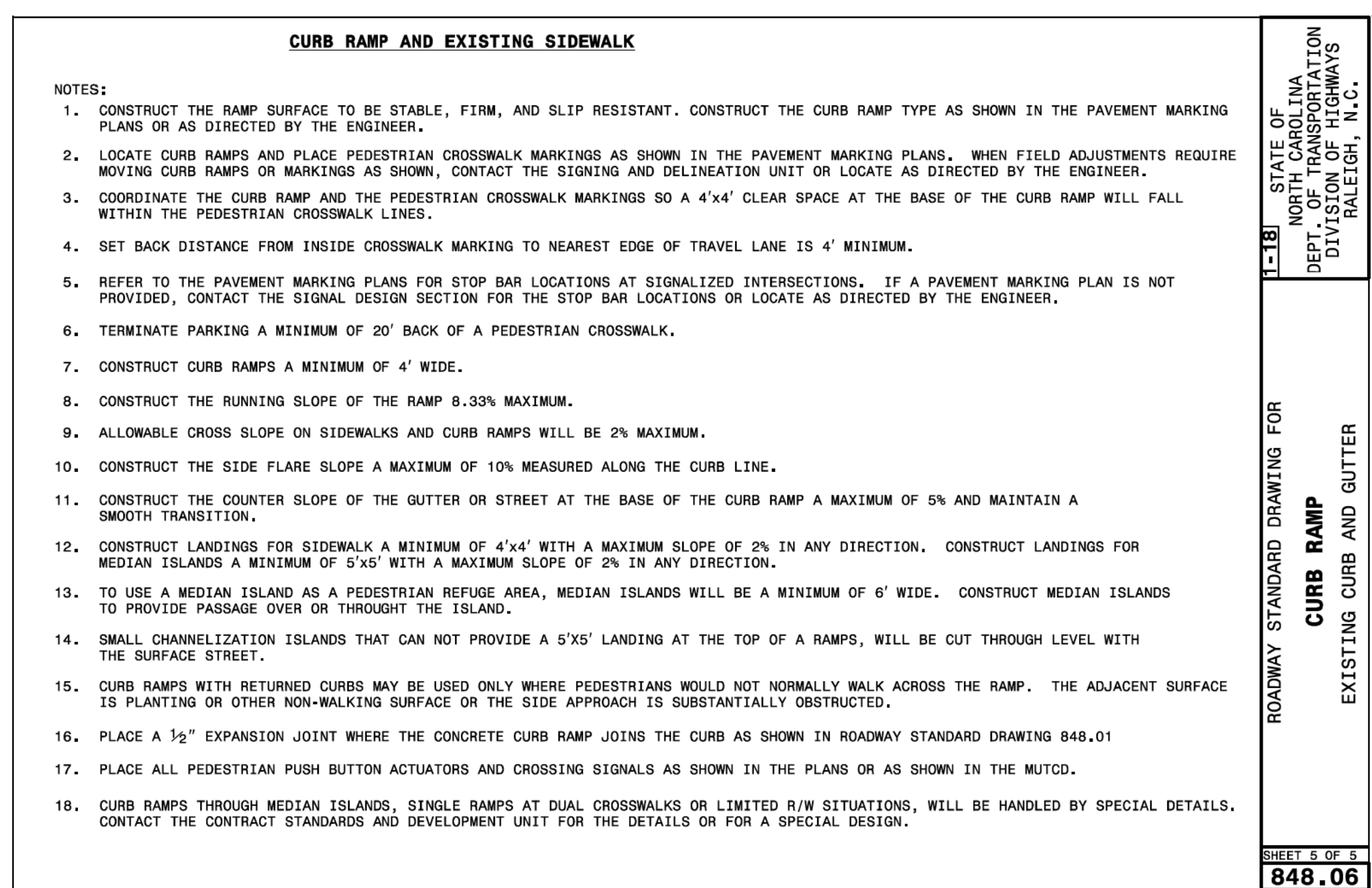
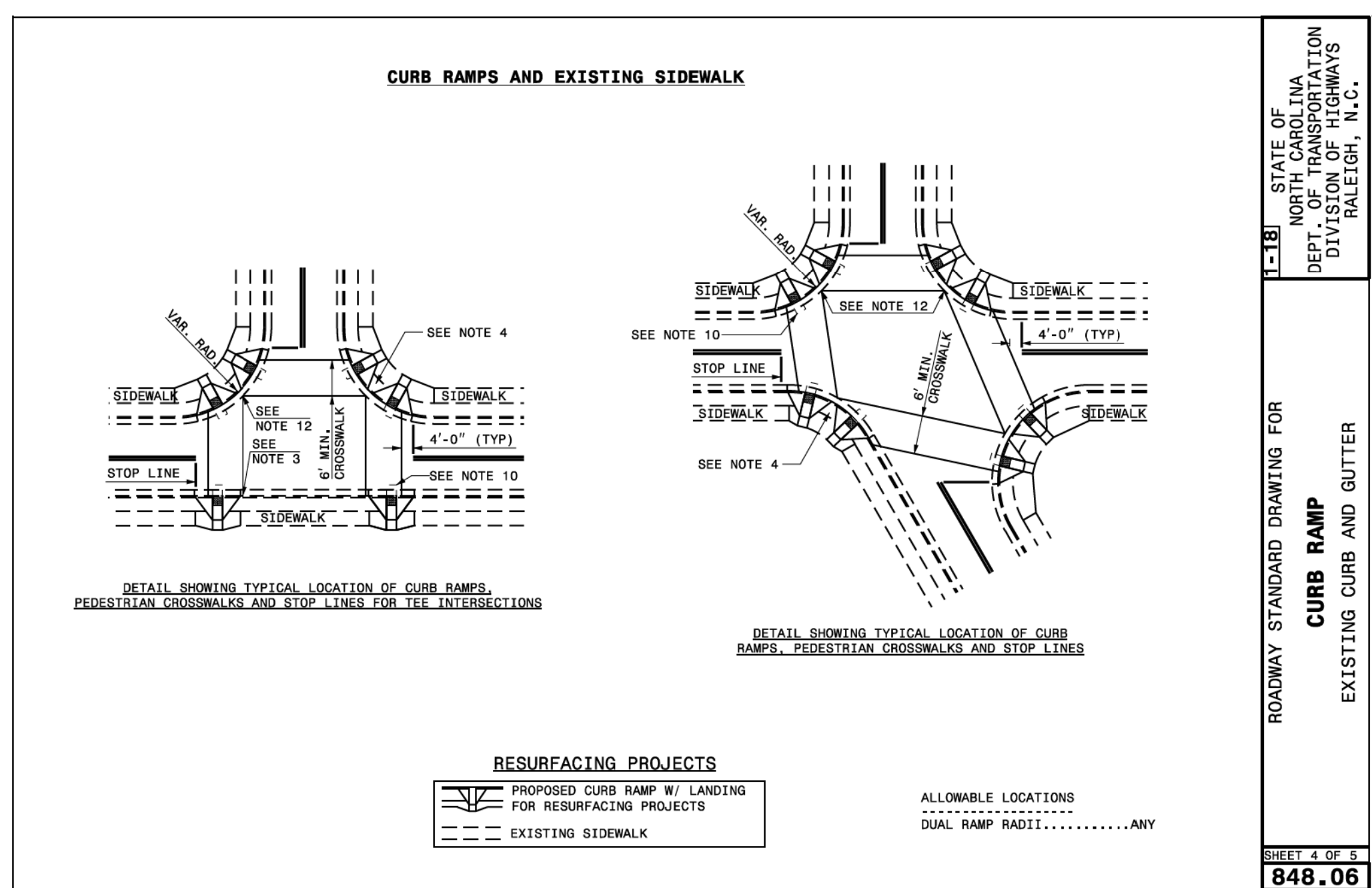
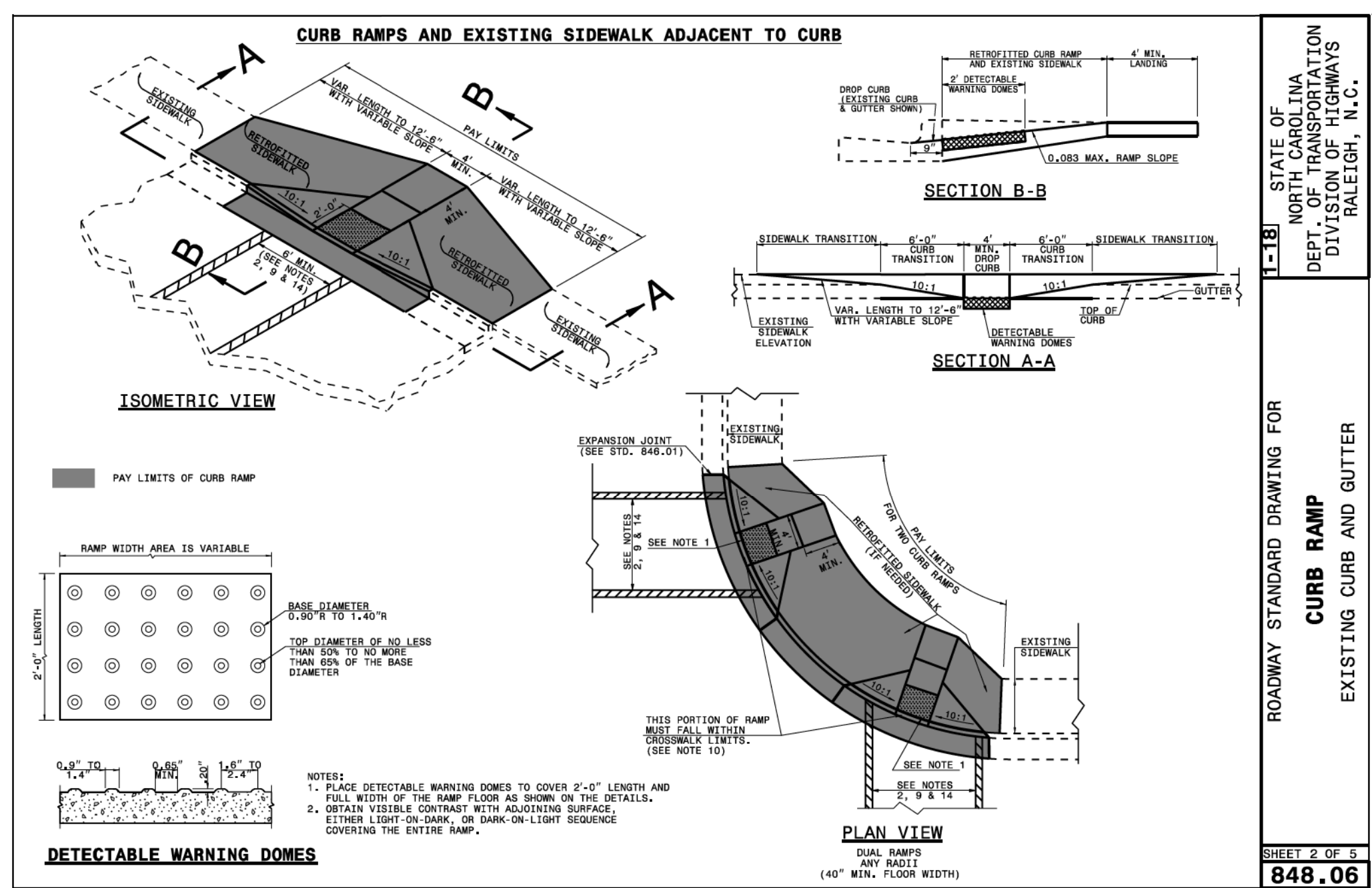
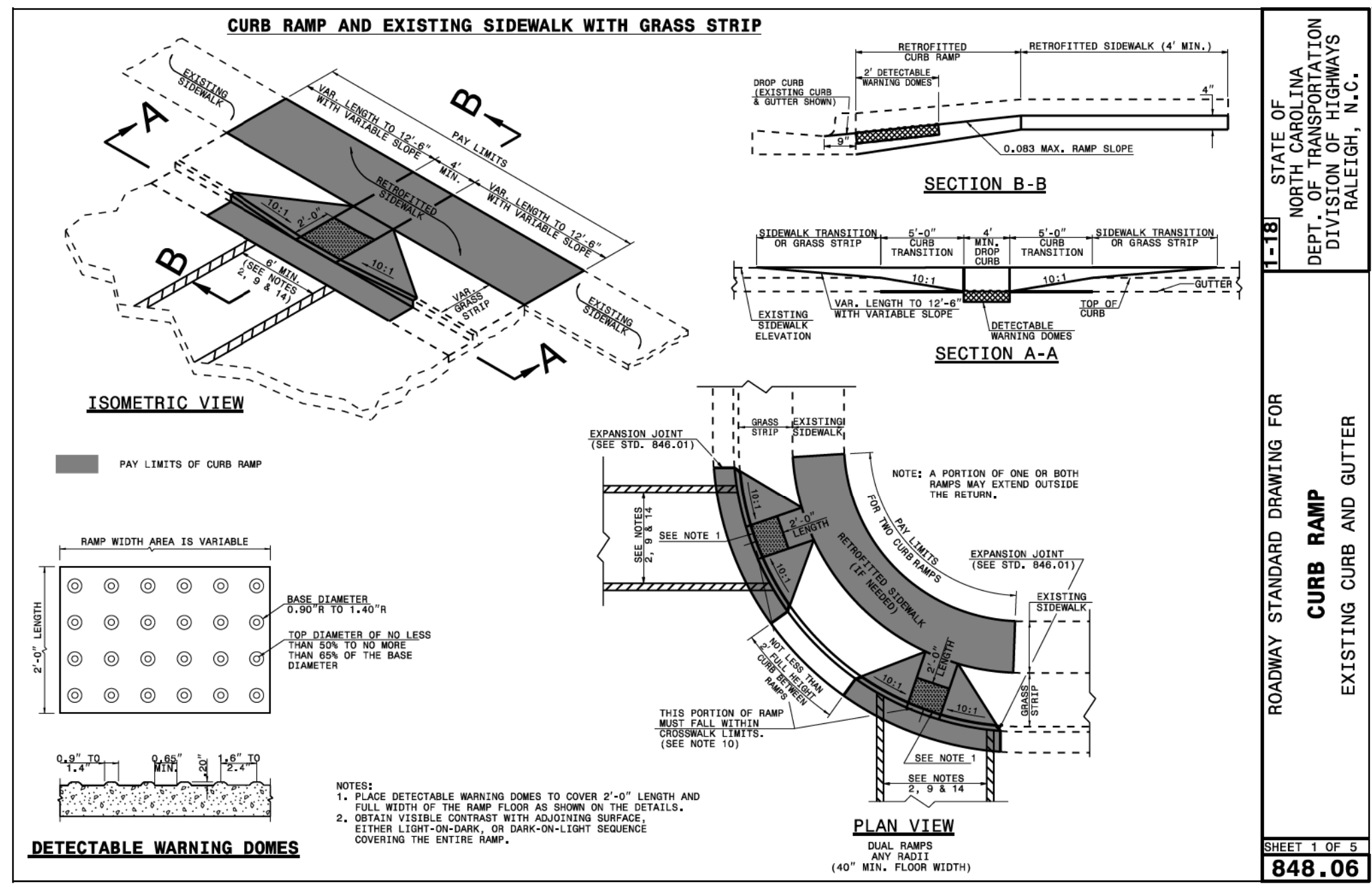
- NOTES:
- CONSTRUCT THE RAMP SURFACE TO BE STABLE, FIRM, AND SLIP RESISTANT. CONSTRUCT THE CURB RAMP TYPE AS SHOWN IN THE PAVEMENT MARKING PLANS OR AS DIRECTED BY THE ENGINEER.
 - LOCATE CURB RAMPS AND PLACE PEDESTRIAN CROSSWALK MARKINGS AS SHOWN IN THE PAVEMENT MARKING PLANS. WHEN FIELD ADJUSTMENTS REQUIRE MOVING CURB RAMPS OR MARKINGS AS SHOWN, CONTACT THE SIGNING AND DELINEATION UNIT OR LOCATE AS DIRECTED BY THE ENGINEER.
 - COORDINATE THE CURB RAMP AND THE PEDESTRIAN CROSSWALK MARKINGS SO A 4'x4' CLEAR SPACE AT THE BASE OF THE CURB RAMP WILL FALL WITHIN THE PEDESTRIAN CROSSWALK LINES.
 - SET BACK DISTANCE FROM INSIDE CROSSWALK MARKING TO NEAREST EDGE OF TRAVEL LANE IS 4' MINIMUM.
 - REFER TO THE PAVEMENT MARKING PLANS FOR STOP BAR LOCATIONS AT SIGNALIZED INTERSECTIONS. IF A PAVEMENT MARKING PLAN IS NOT PROVIDED, CONTACT THE SIGNAL DESIGN SECTION FOR THE STOP BAR LOCATIONS OR LOCATE AS DIRECTED BY THE ENGINEER.
 - TERMINATE PARKING A MINIMUM OF 20' BACK OF A PEDESTRIAN CROSSWALK.
 - CONSTRUCT CURB RAMPS A MINIMUM OF 4' WIDE.
 - CONSTRUCT THE RUNNING SLOPE OF THE RAMP 8.33% MAXIMUM.
 - ALLOWABLE CROSS SLOPE ON SIDEWALKS AND CURB RAMPS WILL BE 2% MAXIMUM.
 - CONSTRUCT THE SIDE FLARE SLOPE A MAXIMUM OF 10% MEASURED ALONG THE CURB LINE.
 - CONSTRUCT THE COUNTER SLOPE OF THE GUTTER OR STREET AT THE BASE OF THE CURB RAMP A MAXIMUM OF 5% AND MAINTAIN A SMOOTH TRANSITION.
 - CONSTRUCT LANDINGS FOR SIDEWALK A MINIMUM OF 4'x4' WITH A MAXIMUM SLOPE OF 2% IN ANY DIRECTION. CONSTRUCT LANDINGS FOR MEDIAN ISLANDS A MINIMUM OF 5'x5' WITH A MAXIMUM SLOPE OF 2% IN ANY DIRECTION.
 - TO USE A MEDIAN ISLAND AS A PEDESTRIAN REFUGE AREA, MEDIAN ISLANDS WILL BE A MINIMUM OF 6' WIDE. CONSTRUCT MEDIAN ISLANDS TO PROVIDE PASSAGE OVER OR THROUGH THE ISLAND.
 - SMALL CHANNELIZATION ISLANDS THAT CAN NOT PROVIDE A 5'x5' LANDING AT THE TOP OF A RAMPS, WILL BE CUT THROUGH LEVEL WITH THE SURFACE STREET.
 - CURB RAMPS WITH RETURNED CURBS MAY BE USED ONLY WHERE PEDESTRIANS WOULD NOT NORMALLY WALK ACROSS THE RAMP. THE ADJACENT SURFACE IS PLANTING OR OTHER NON-WALKING SURFACE OR THE SIDE APPROACH IS SUBSTANTIALLY OBSTRUCTED.
 - PLACE A 1/2" EXPANSION JOINT WHERE THE CONCRETE CURB RAMP JOINS THE CURB AS SHOWN IN ROADWAY STANDARD DRAWING 848.01
 - PLACE ALL PEDESTRIAN PUSH BUTTON ACTUATORS AND CROSSING SIGNALS AS SHOWN IN THE PLANS OR AS SHOWN IN THE MUTCD.
 - CURB RAMPS THROUGH MEDIAN ISLANDS, SINGLE RAMPS AT DUAL CROSSWALKS OR LIMITED R/W SITUATIONS, WILL BE HANDLED BY SPECIAL DETAILS. CONTACT THE CONTRACT STANDARDS AND DEVELOPMENT UNIT FOR THE DETAILS OR FOR A SPECIAL DESIGN.

STATE OF NORTH CAROLINA
DEPT. OF TRANSPORTATION
DIVISION OF HIGHWAYS
RALEIGH, N.C.

ROADWAY STANDARD DRAWING FOR
CURB RAMPS
NOTES

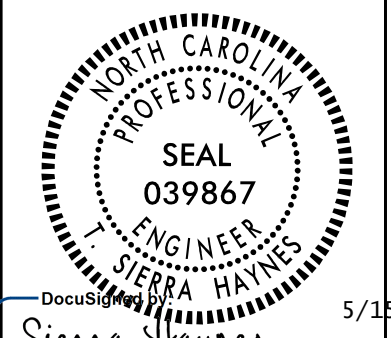
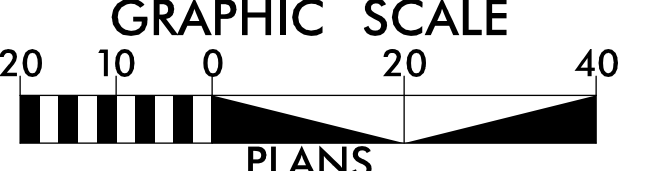
SHEET 3 OF 3
848.05

PROJECT REFERENCE NO. R-5794B	SHEET NO. 2C-2
RW SHEET NO.	
ROADWAY DESIGN ENGINEER	
3/31/2018 2:48:26 PM PDT	
DOCUMENT NOT CONSIDERED FINAL UNLESS ALL SIGNATURES COMPLETED	

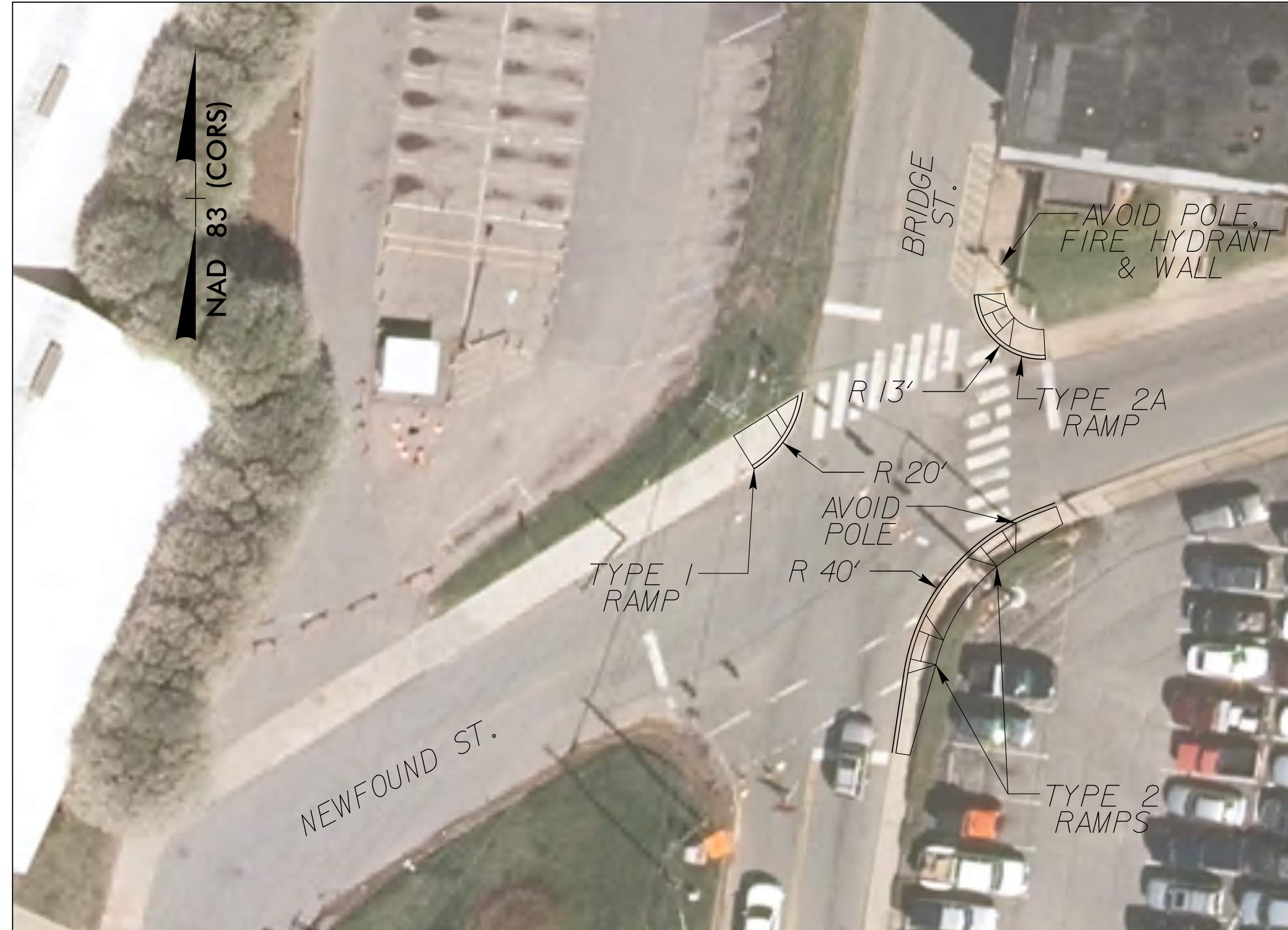


SITE PLAN SHEETS

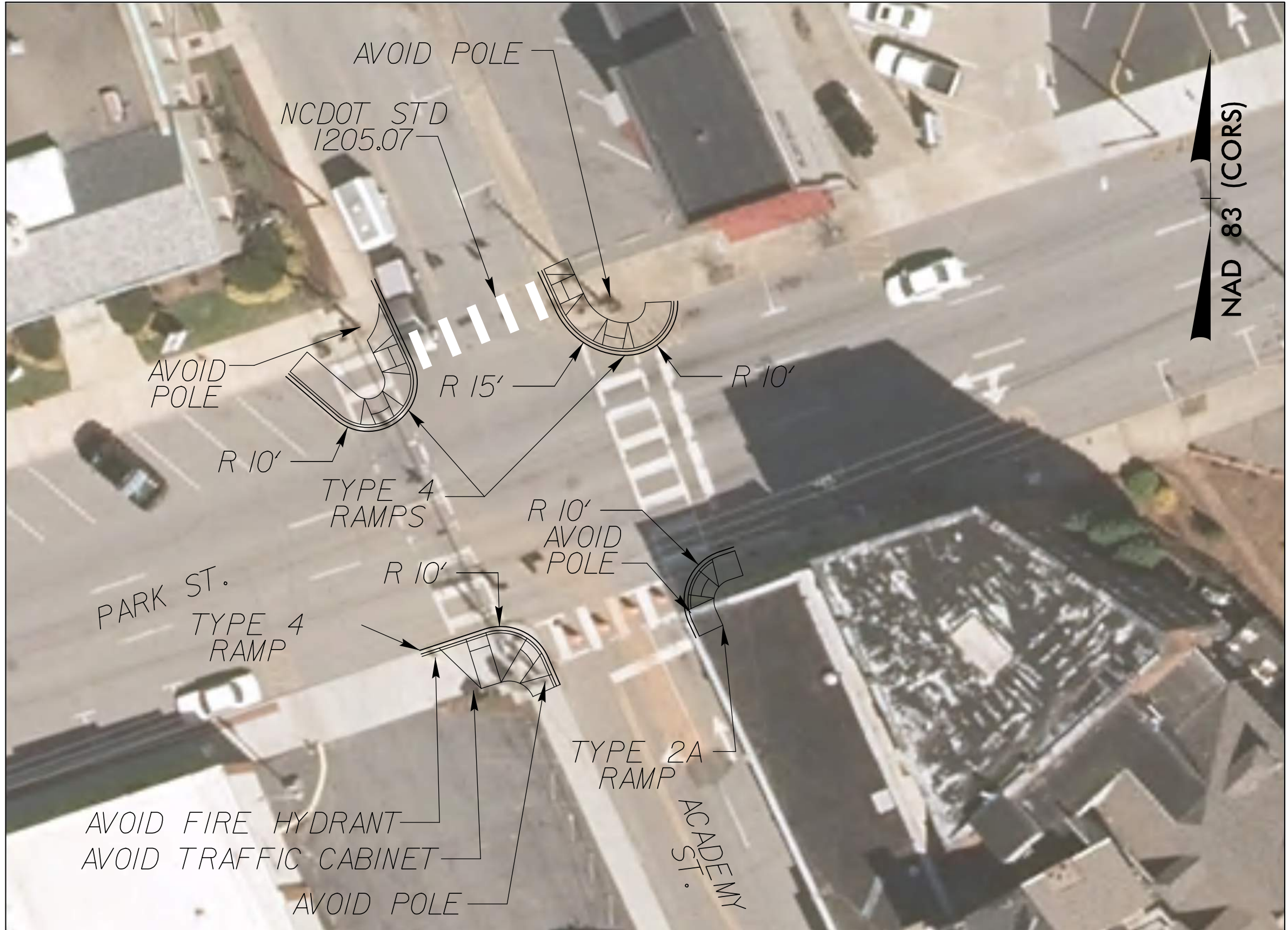
wsp 1001 MOREHEAD SQUARE DRIVE
SUITE 610
CHARLOTTE, NC 28203
NC LIC. NO. F-0165

PROJECT REFERENCE NO. R-5794B	SHEET NO. 4
RW SHEET NO.	
ROADWAY DESIGN ENGINEER	
	
5/15/2018 12:34:10 PM PDT	
DOCUMENT NOT CONSIDERED FINAL UNLESS ALL SIGNATURES COMPLETED	
GRAPHIC SCALE  PLANS	

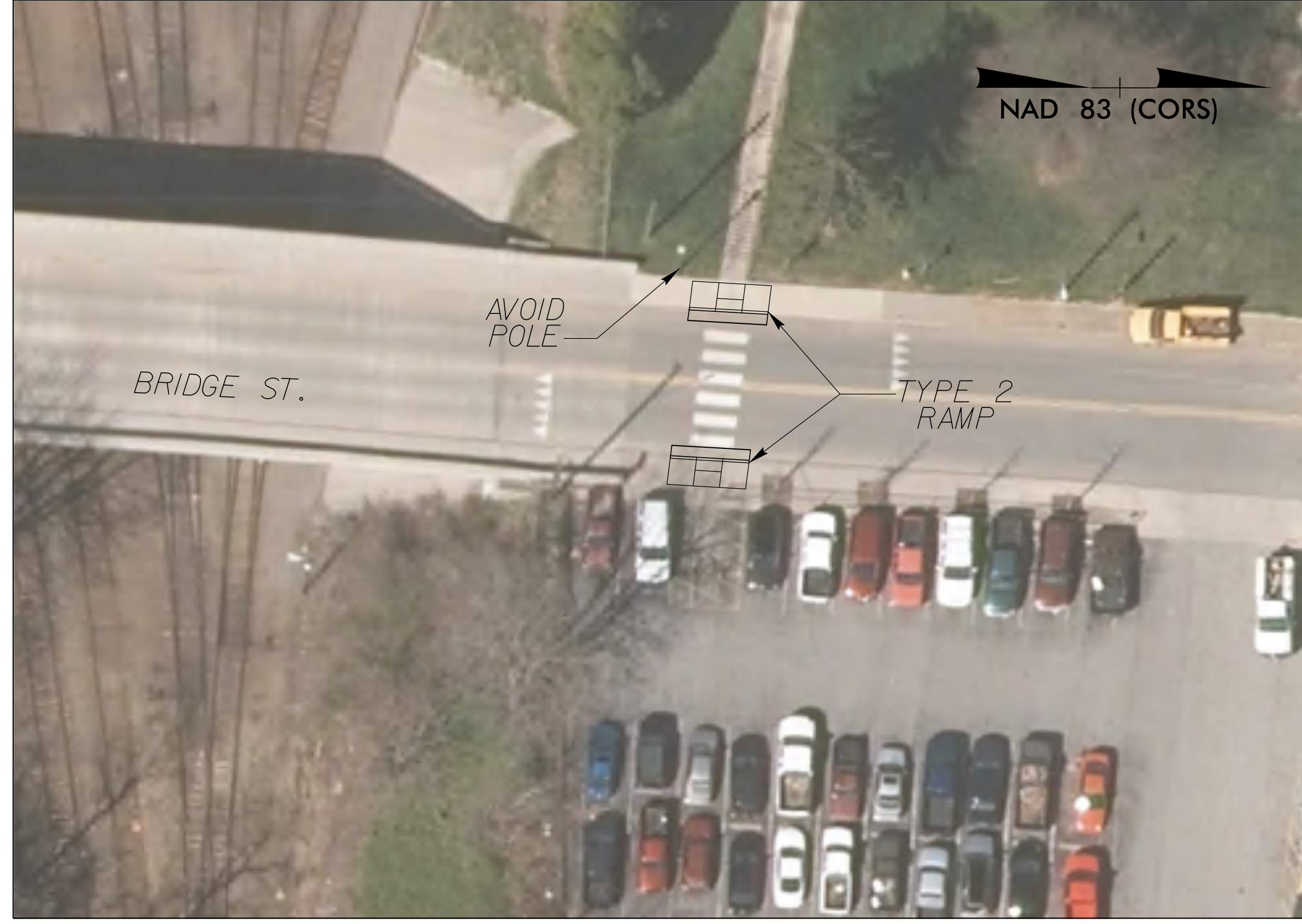
SITE 1 - BRIDGE STREET AND NEWFOUND STREET



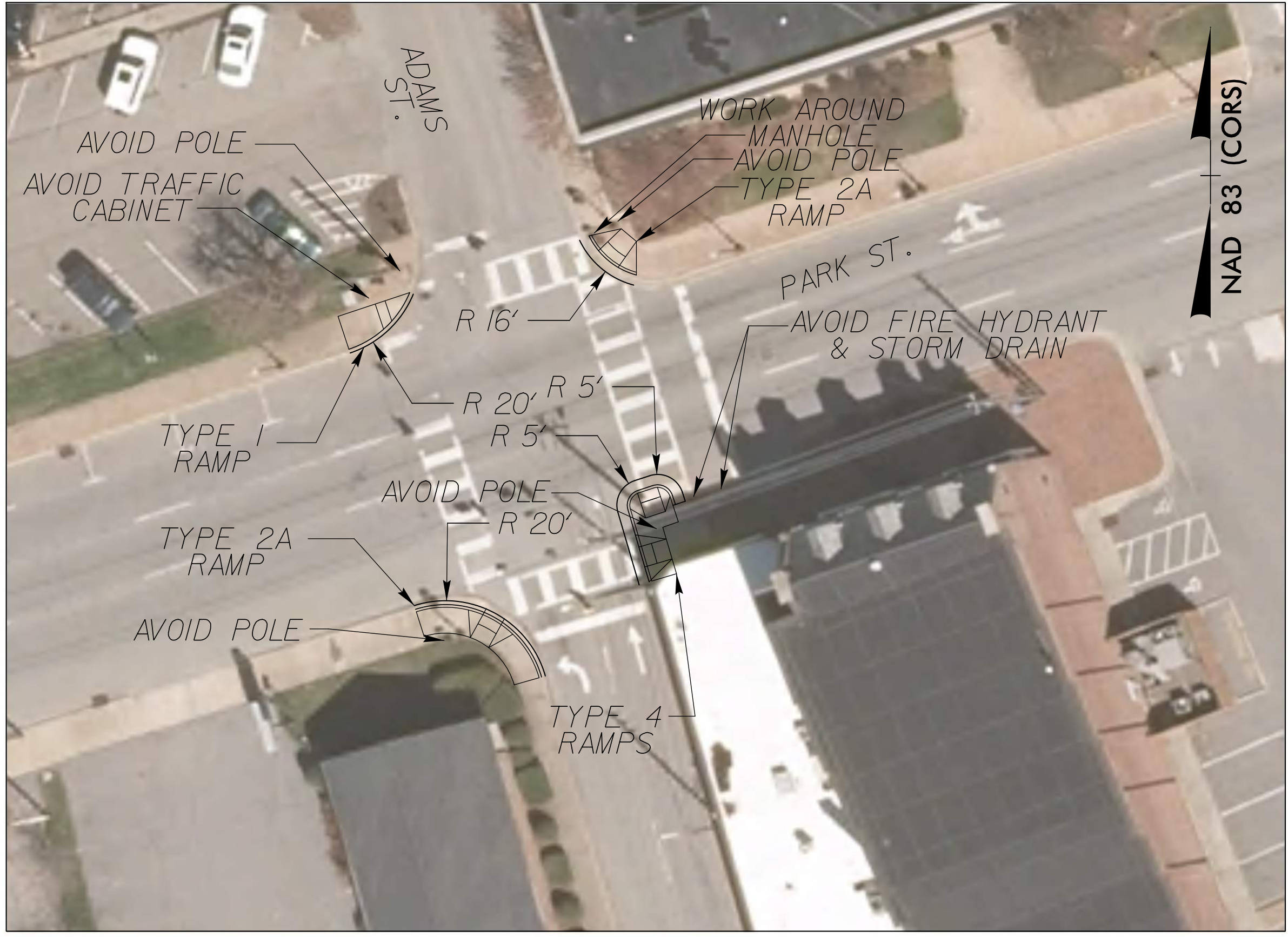
SITE 3 - PARK STREET AND ACADEMY STREET



SITE 2 - BRIDGE STREET - MIDBLOCK BETWEEN CHURCH STREET AND NEWFOUND STREET



SITE 4 - PARK STREET AND ADAMS STREET



SEE SHEETS 2C-1 & 2C-2 FOR CURB RAMP DETAILS